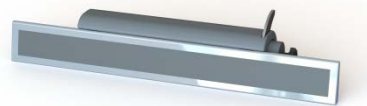


Backstroke Start Device

An Anti-Slip, Accelerated-Start Device for Backstroke Swimmers



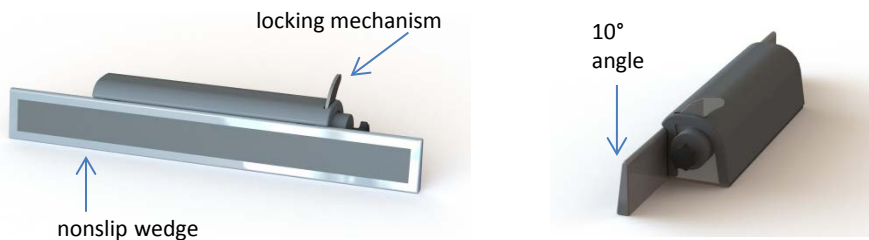
- Improves foot grip for backstroke starts
- Easy to use
- Works with multiple styles of blocks
- Attaches with straps or anchors
- Easily adjustable
- Automatically retracts out of the water



SPECTRUM[®]
Aquatics

A PLAYCORE Company

BACKSTROKE START DEVICE FROM SPECTRUM AQUATICS®



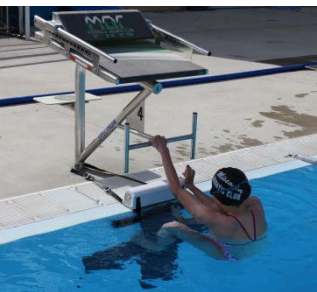
Product demonstration video

Backstroke swimmers risk a slip start when pushing off a pool wall or slippery touchpad during the start of a backstroke race. The backstroke start device (patent pending) from Spectrum Aquatics is designed to reduce this.

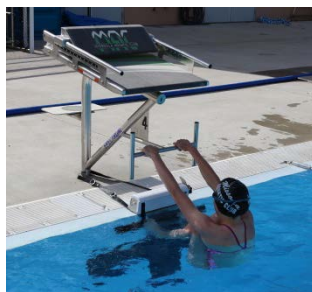
- Contains a 65 x 8cm nonslip wedge with a 10° angle to secure foot placement along pool wall.
- Easily adjustable and locks into place, allowing swimmers to select desired location of the nonslip wedge along the pool wall.
- Automatically retracts up and out of the water so as not to interfere with flip turns and touchpad interactions, eliminating the need for manual removal.
- Compatible with nearly all block types and pool configurations - can be strapped around a starting platform for easy set up, or it can be attached to pop-up anchors in a pool deck for a more permanent (yet still removable) solution.
- Custom attachment options are also available.

HOW DOES IT WORK?

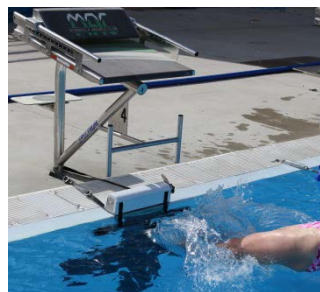
1. Unlock and pull wedge strip to desired location



2. Place feet on nonslip wedge



3. Proceed with your backstroke start



4. Wedge automatically retracts out of the water

