

Swim-Lift®, GALLATIN WP400 0"-6", P/N 27336

The Swim-Lift® Gallatin assisted access lift is designed for use with in-ground swimming pools and/or spas having no less than 15" of total water depth (deck to floor of pool). This lift is self-operated and hydraulically powered. The lift is rated at a 400-lb lifting capacity with a pressure of 55-psi. Transport wheels allow the unit to be removed and stored when not in use.

The assisted access lift shall consist of the following components:

Lift

The lifting mechanism is a 4 1/2" stainless steel cylinder incorporating a hemispherical shaped piston to facilitate 42" of vertical travel accommodating water drafts from 0 - 6". The base stand, which is to be secured to the deck at two locations 29 5/8" O.C. will accommodate anchor locations from 18" to 30" from pool wall. This unit shall require an onsite measuring guide for setback and water draft.

The lift requires two anchors, and includes two 1" threaded bolts for use in securing the lift to the anchor assembly.

- The preset anchor assembly includes two jig-mounted threaded in-beds that are located 29 5/8" O.C. The preset assembly includes a grounding lug for proper bonding.

- The retrofit anchor assembly includes two threaded in-beds, each with a 3/8" expansion anchor secured at the bottom of the acme nut by a 3/8" bolt.

A valve control handle requiring less than 5-lb of force to operate is to be positioned at both deck and pool levels adjacent to the seat at the resting position to facilitate independent operation. The valve control does not require continuous manual force to operate.

The self-adjusting, swiveling, flip-up footrest measures 10" x 8". The stainless steel flip-up armrest provides stability to the user during lift movement and is structurally capable of supporting the user during transport to or from a wheelchair.

Seat Assembly

The seat is 18" high, 18" deep. The seat surface is flat to ease transfer from a wheelchair. The seat belt assembly employs wide synthetic webbed belts along with a quick release, non-metallic cam-lock buckle.

Water Box

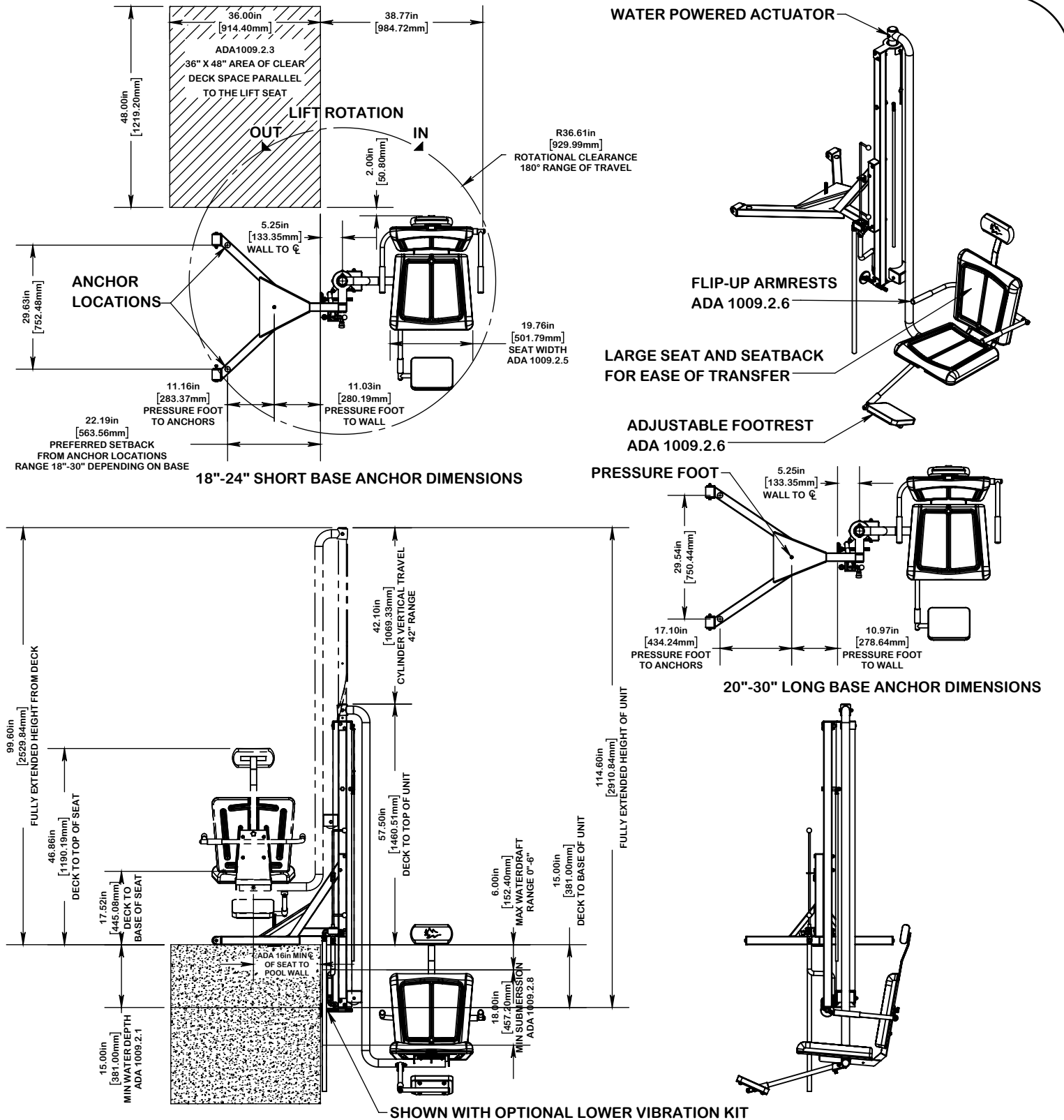
Spectrum recommends a stainless steel water box to be installed in the pool deck adjacent to the installation site of the lift. The box is 8" wide x 8" long x 6 1/8" deep and features a vandal resistant cover. It is provided with a 1 1/8" diameter hole in the side wall to allow for a supply line. A hose spigot should be plumbed into the box allowing for connection of a flexible hose. The removable lid has a 1 1/8" diameter hole for the hose to pass through.

Pressure Amplification System

The pressure amplification system consists of a 1/2-HP, single-phase, 60-cycle, 3450 RPM stainless steel centrifugal pump. The unit has a performance rating of 5-GPM at 60-psi. The system employs a hydro-pneumatic pressure-sustaining tank having a maximum working pressure of 100-psi with a 3/4" NPTM tank as a holding reservoir.

Warranty

Two year limited warranty.



A PLAYCORE Company

7100 Spectrum Lane Missoula, Montana 59808
800.791.8056 www.spectrumproducts.com

ENGINEERING DATA

PRODUCT:	GALLATIN WP400 0"-6"			
MODEL #:	1830396	CATALOG #:	27336	REVISION: A
MATERIAL:	SEE BILL OF MATERIALS			
FINISH #:	PASSIVATE IAW ASTM A967			

NOTE:

⚠ DIMENSIONS VARY WITH SPECIFIC APPLICATIONS. SPECIFICATIONS ARE NOMINAL AND ARE SUBJECT TO CHANGE. PLEASE CONTACT SPECTRUM AQUATICS FOR CUSTOM APPLICATIONS