

Anchor, Stainless Steel Cup, Crossbar, part number 160013

Anchor Body

The stainless steel cup anchor shall be fabricated entirely of type 316L series stainless steel. The cup and flange portion of the anchor body shall be stamped or drawn for a single piece of material. The cup portion shall be 3" inside diameter with a depth of 2.5". The face flange shall be 4" square and shall fit flush with the finished pool wall. A standoff shall be provided which shall secure the eyebolt, support an anchoring flange and bonding screw attachment.

Welds

All welds shall be the TIG type and shall be applied using type 300 series welding rod to enhance corrosion resistance.

Crossbar

A crossbar shall be provided. The crossbar shall be 300 series stainless steel. The crossbar shall be slightly subflush with the flange face of the anchor body. The crossbar shall be 3/8" bar.

Bonding

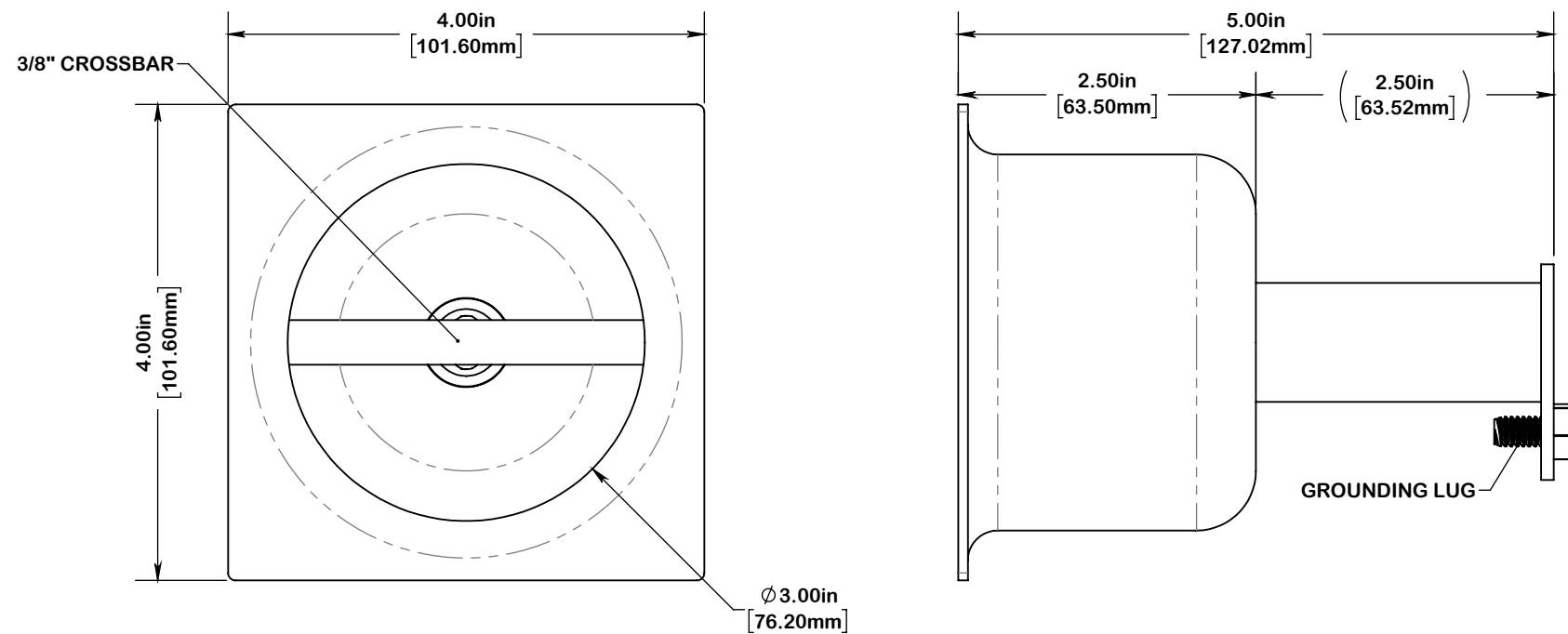
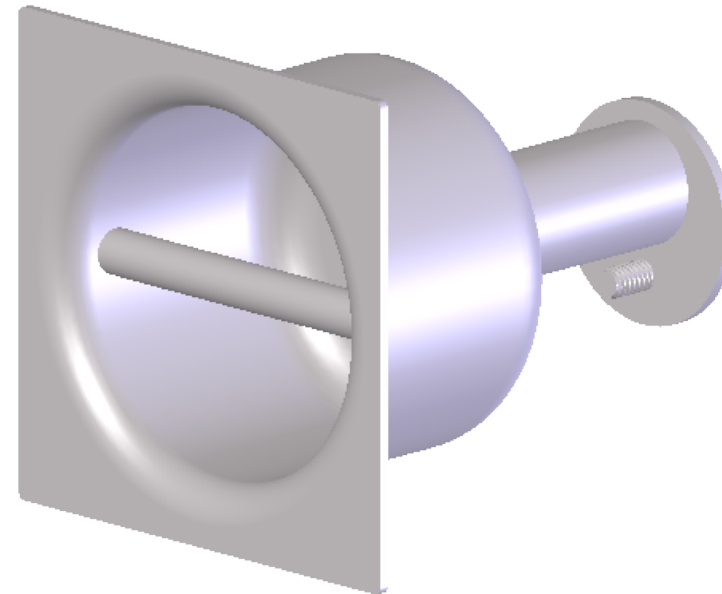
A bonding screw shall be provided. The bonding screw will be 18-8 stainless steel. Minimum size of bonding screw shall be 0.24" diameter.

Material

All components of the cup anchor shall be stainless steel. No dissimilar metallic components will be allowed.

Warranty

Spectrum standard.



7100 Spectrum Lane Missoula, Montana 59808
800.791.8056 www.spectrumproducts.com

ENGINEERING DATA

PRODUCT:	CUP ANCHOR - BAR -			
MODEL #:	160013	CATALOG #:		REVISION: A
MATERIAL:	316L STAINLESS STEEL			
FINISH #:	PASSIVATE IAW ASTM A967			

NOTE:

⚠ DIMENSIONS VARY WITH SPECIFIC APPLICATIONS. SPECIFICATIONS ARE NOMINAL AND ARE SUBJECT TO CHANGE. PLEASE CONTACT SPECTRUM AQUATICS FOR CUSTOM APPLICATIONS