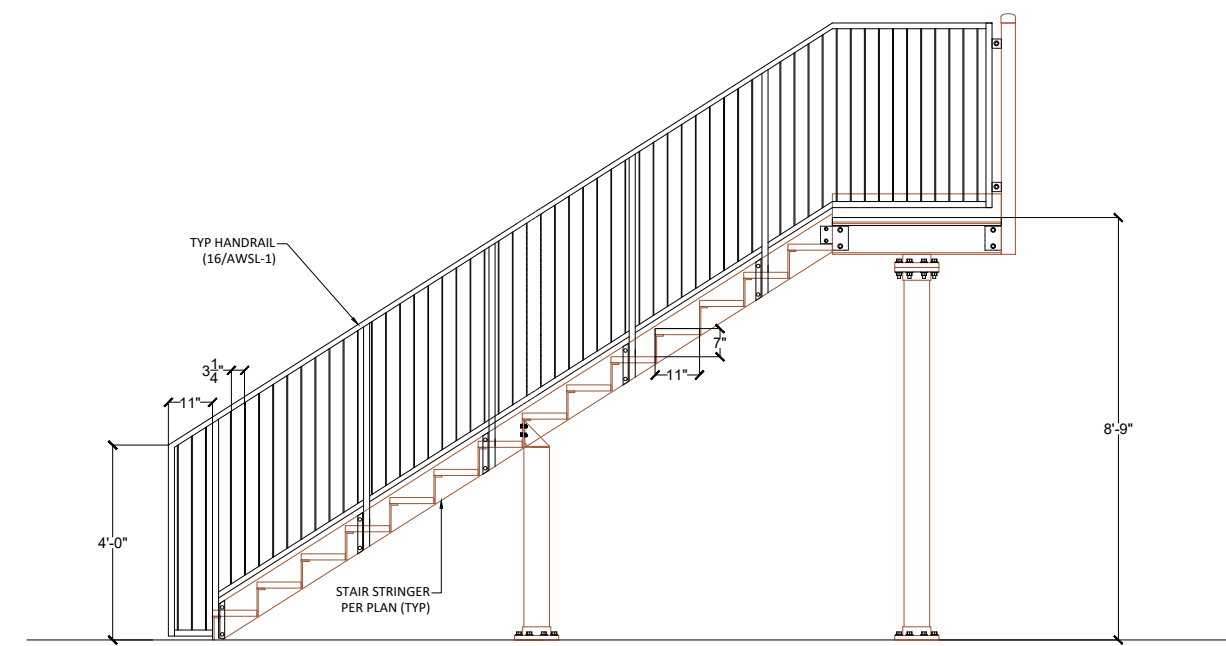
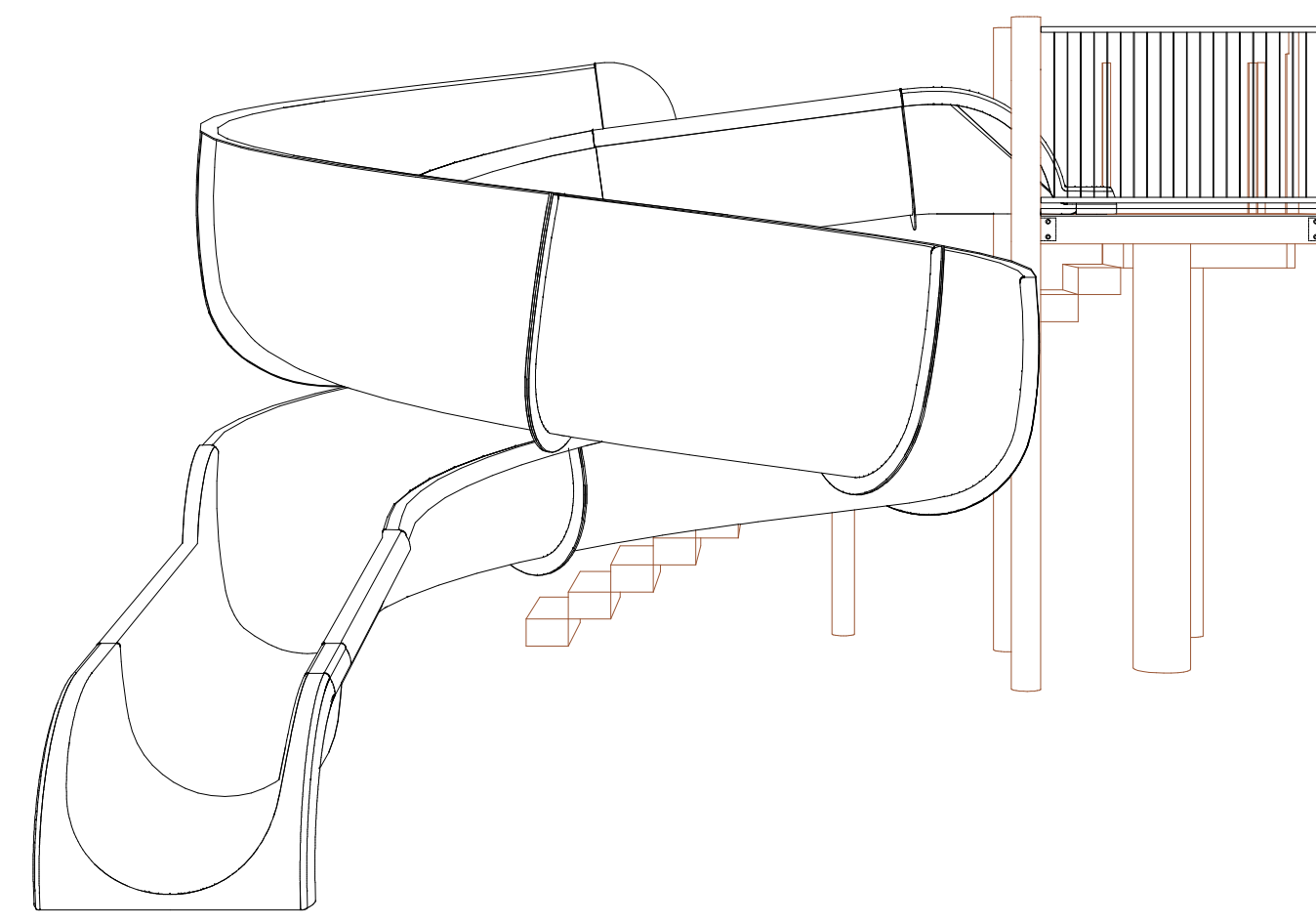


1 MAIN PLATFORM SIDE ELEVATION
AWSL-1

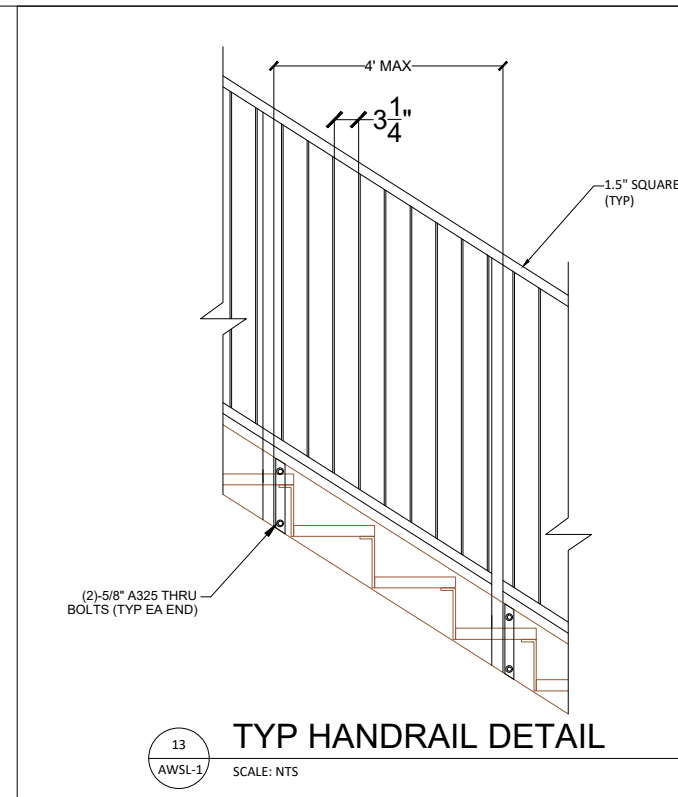
2 FIRST & MAIN PLATFORM REAR ELEVATION
AWSL-1



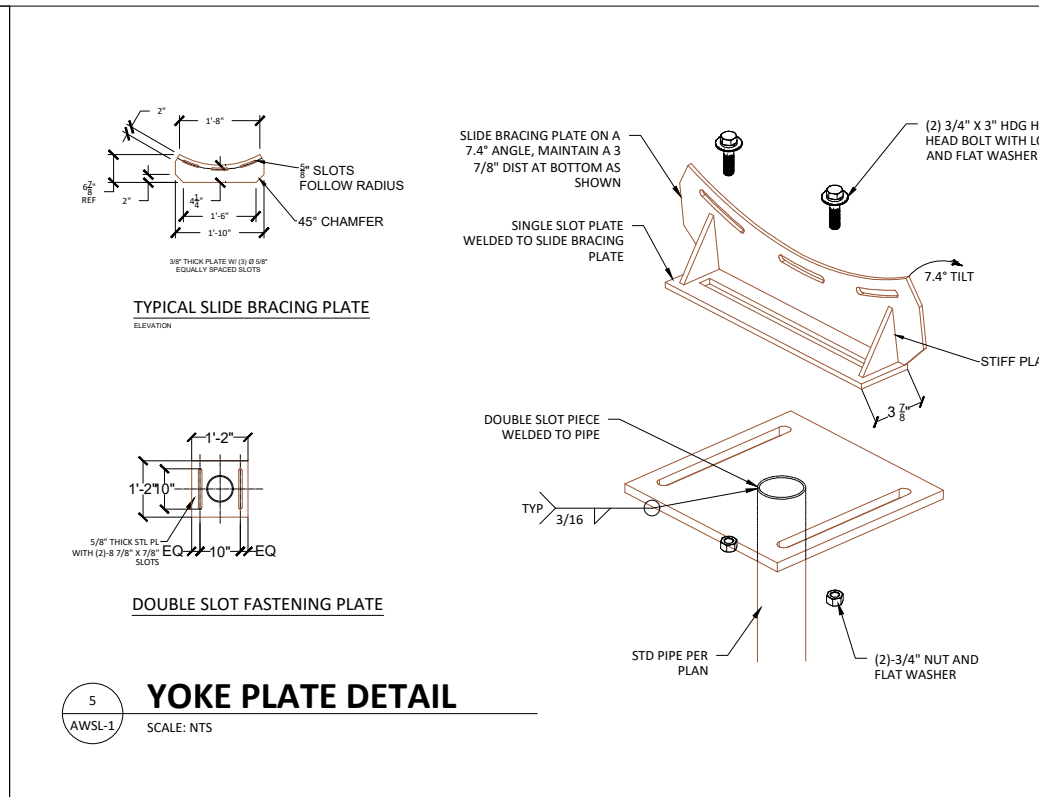
3 STAIRS & FIRST PLATFORM ELEVATION
AWSL-1



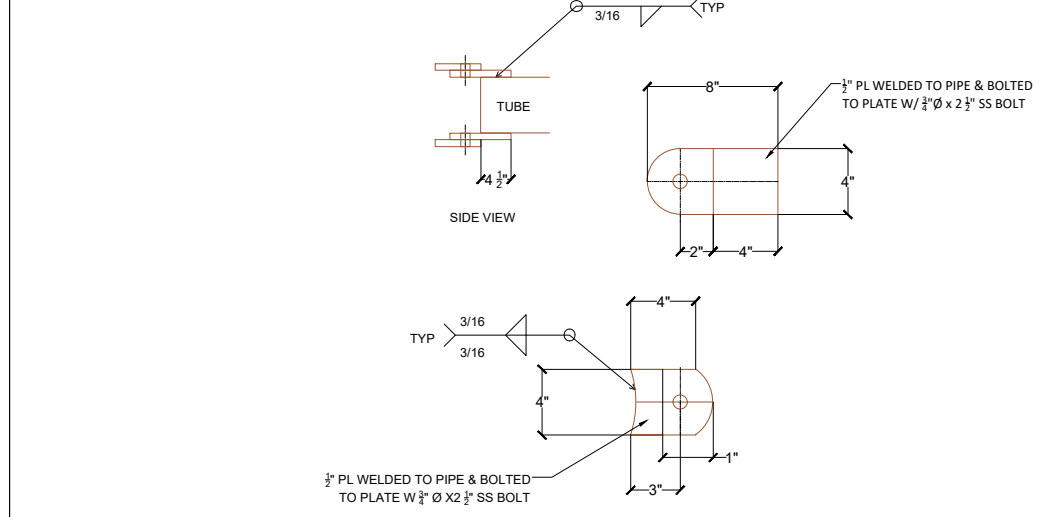
A SLIDE FRONT ELEVATION
AWSL-1 SCALE: 1/2"=1'-0"



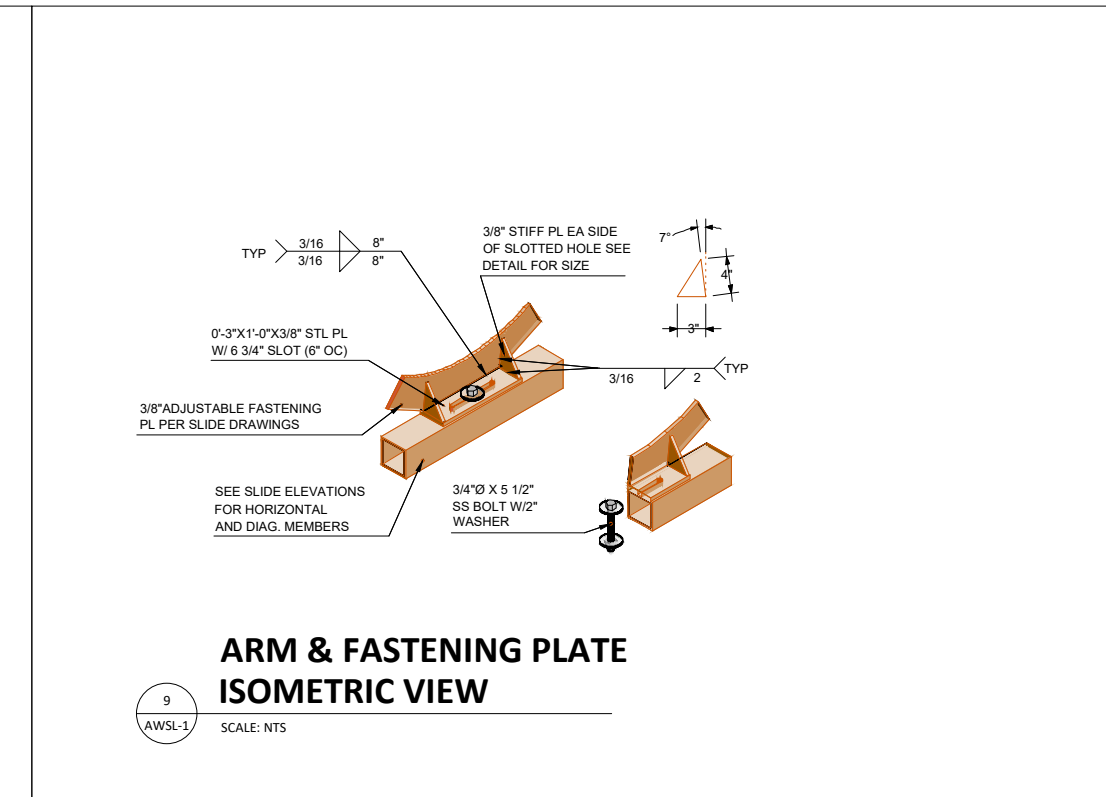
TYP HANDRAIL DETAIL
AWSL-2 SCALE: NTS



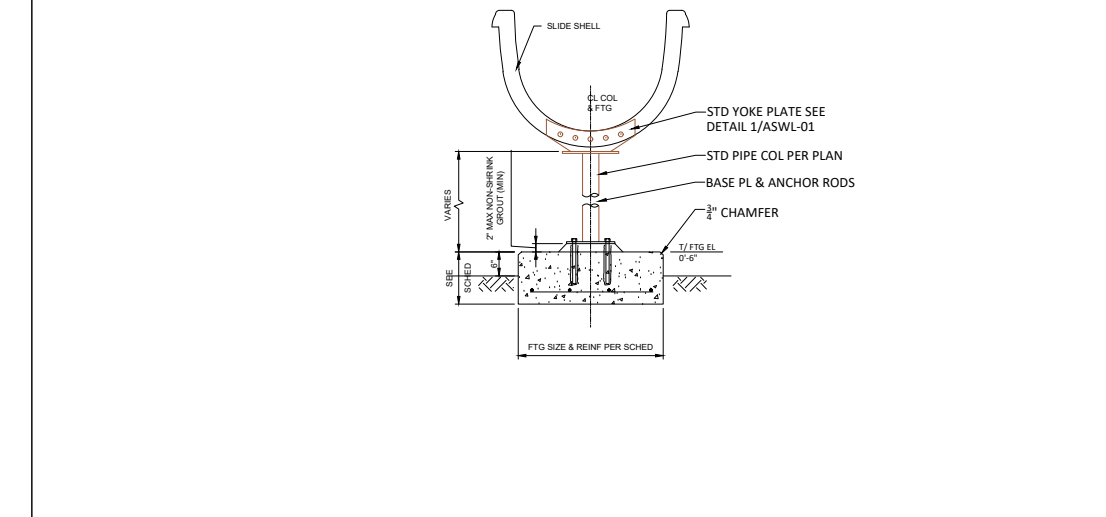
YOKES PLATE DETAIL
AWSL-2 SCALE: NTS



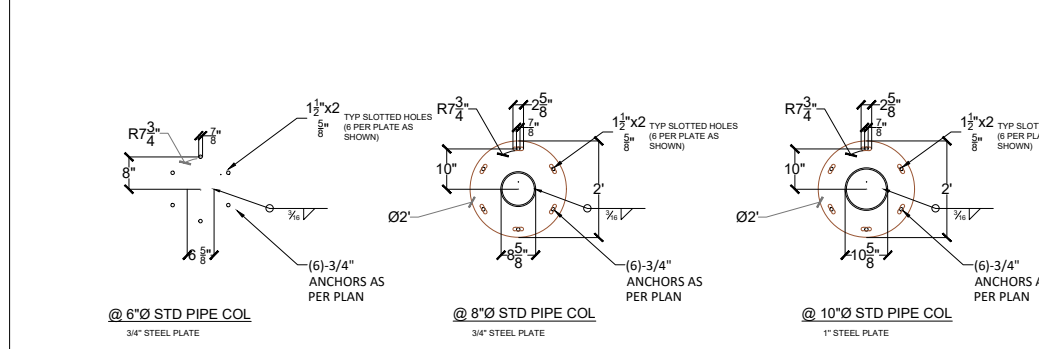
HOR. ARM BRACKET DETAIL
AWSL-2 SCALE: NTS



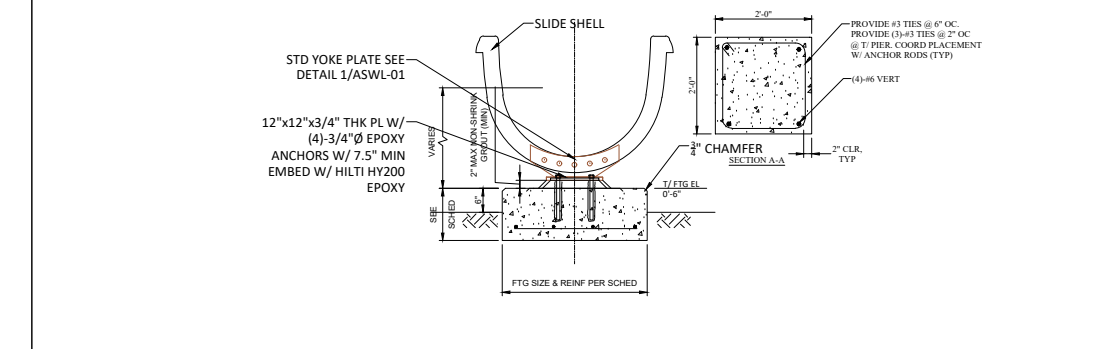
ARM & FASTENING PLATE ISOMETRIC VIEW
AWSL-2 SCALE: NTS



YOKES PLATE SECTION ON COLUMN
AWSL-2 SCALE: NTS

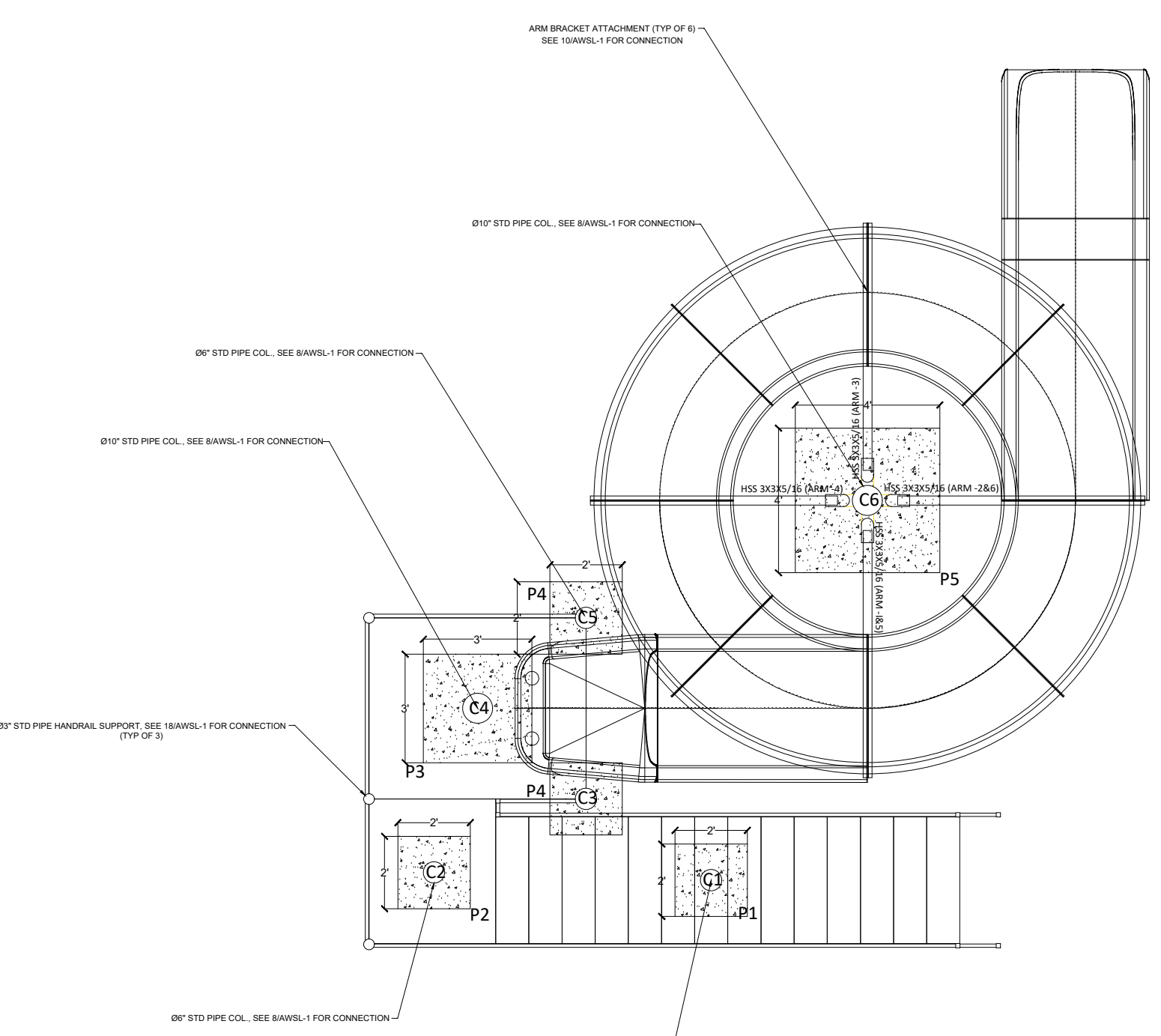


BASE PLATE DETAILS
AWSL-2 SCALE: NTS

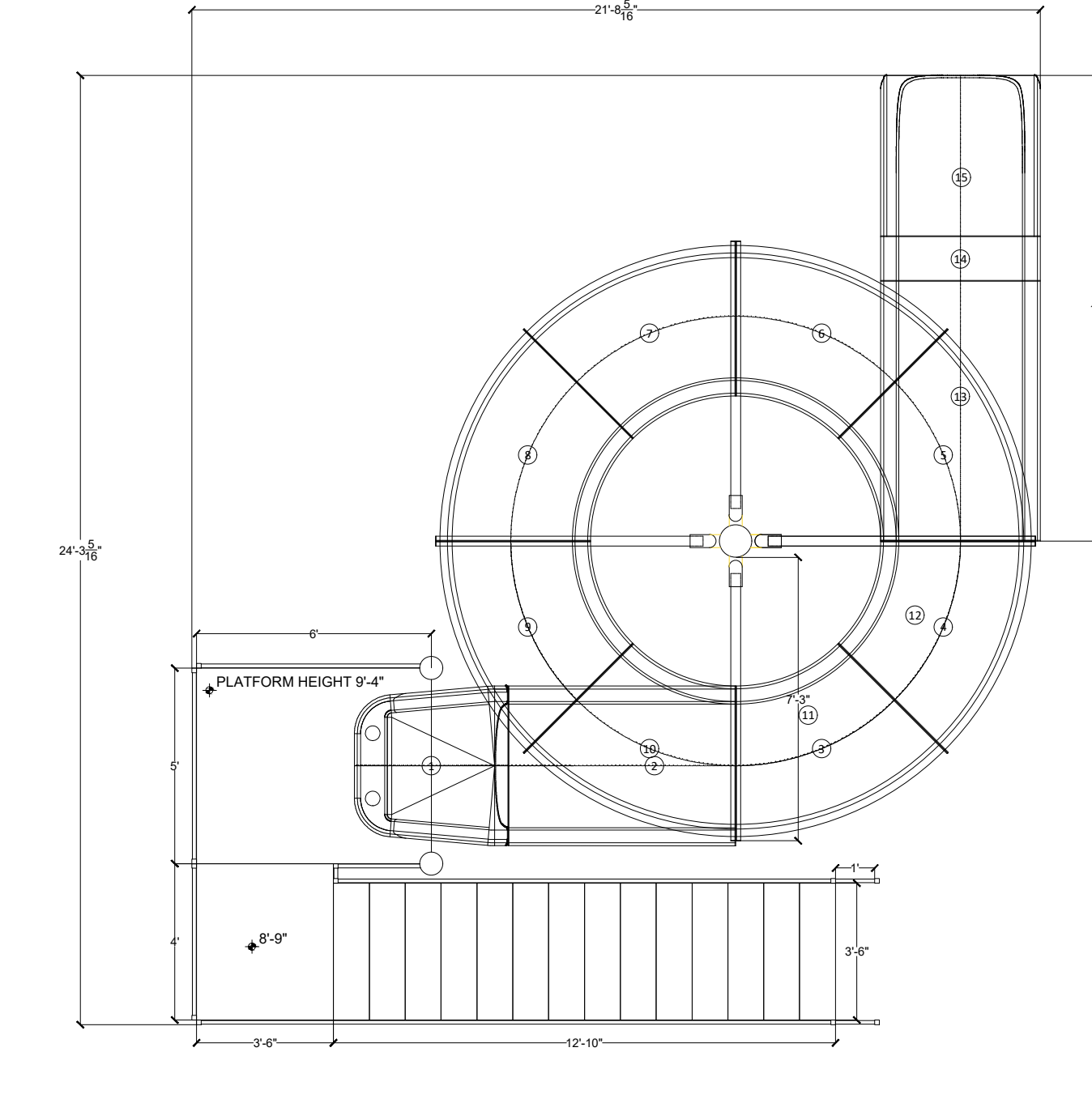


YOKES PLATE SECTION ON CONCRETE PIER
AWSL-2 SCALE: NTS

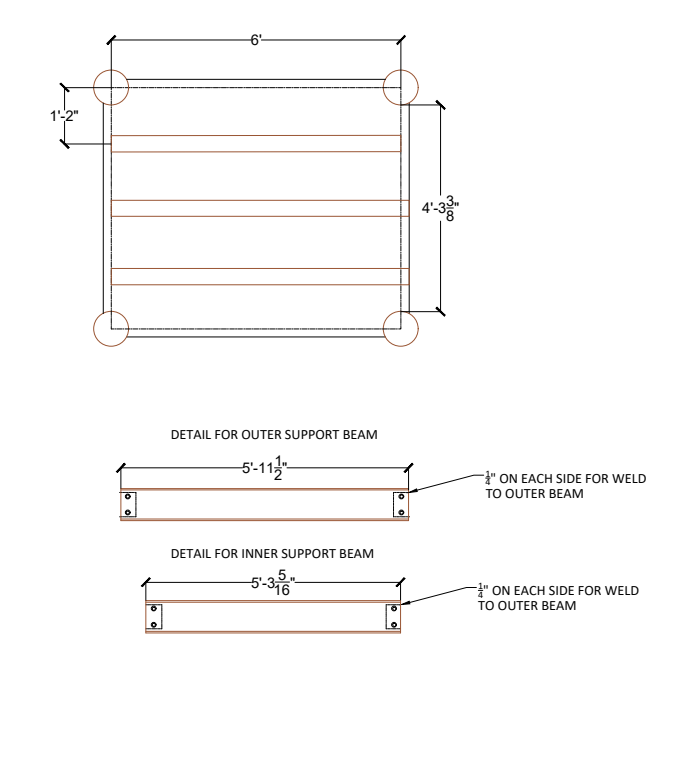
ID	FUNCTION	LENGTH	WIDTH	DEPTH	BOTTOM BEAM (CONCRETE)	BOTTOM BEAM (STEEL)	ELEVATION
1	1" DIA SUPPORT COLUMN	2'-0"	2'-0"	1'-0"	4'-6"	4'-6"	8'-2"
2	1" DIA HORIZONTAL BRACKET	2'-0"	2'-0"	1'-0"	4'-6"	4'-6"	8'-2"
3	1" DIA VERTICAL BRACKET	2'-0"	2'-0"	1'-0"	4'-6"	4'-6"	8'-2"
4	1" DIA HORIZONTAL BRACKET	2'-0"	2'-0"	1'-0"	4'-6"	4'-6"	8'-2"
5	1" DIA VERTICAL BRACKET	2'-0"	2'-0"	1'-0"	4'-6"	4'-6"	8'-2"



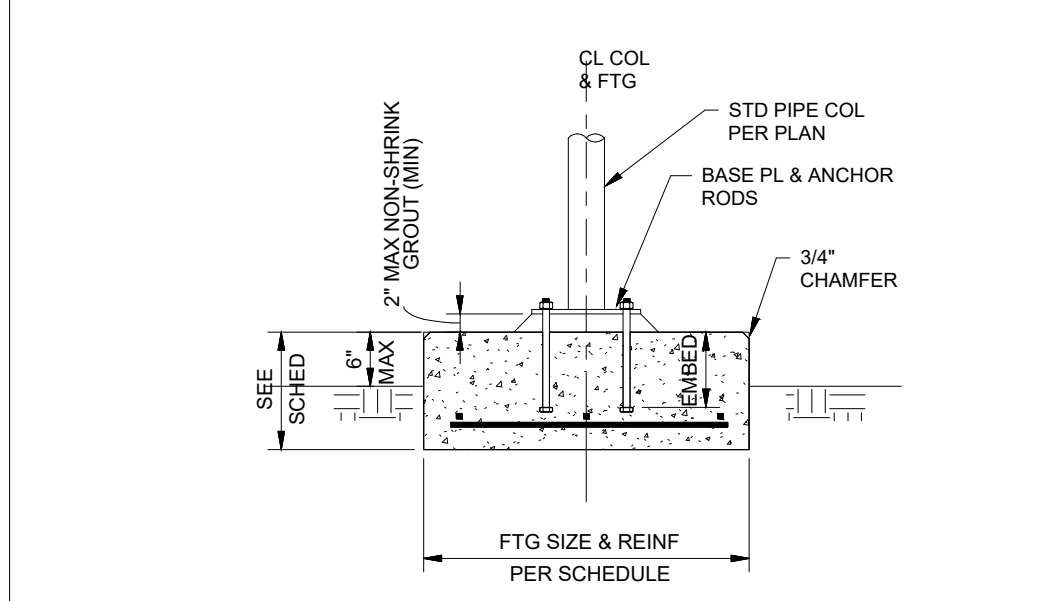
FOOTING DETAIL
AWSL-2 SCALE: 1/2"=1'-0"



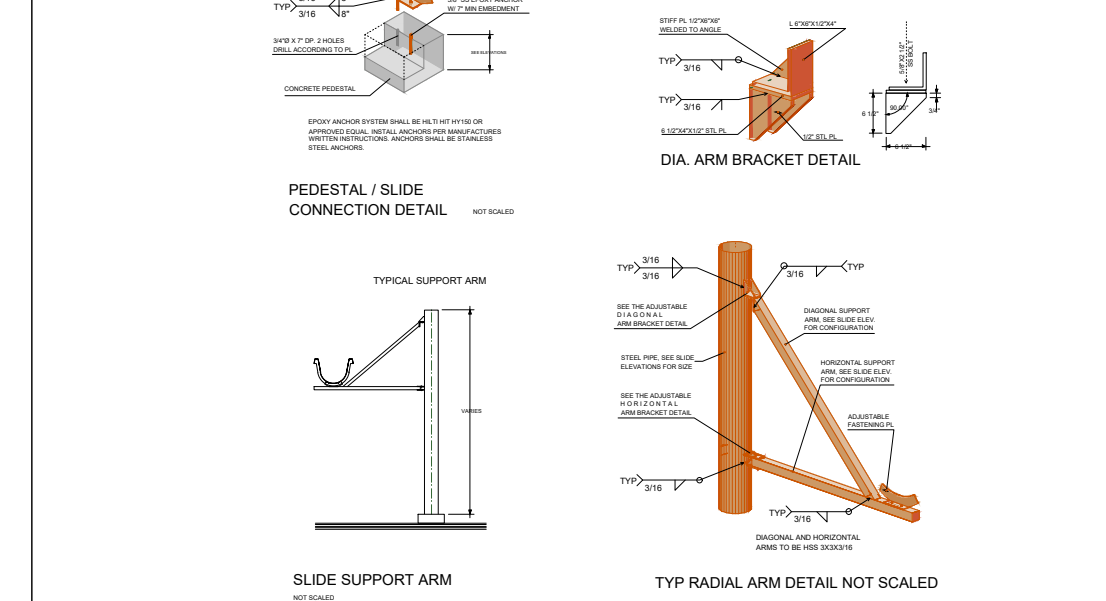
PLAN
AWSL-2 SCALE: 1/2"=1'-0"



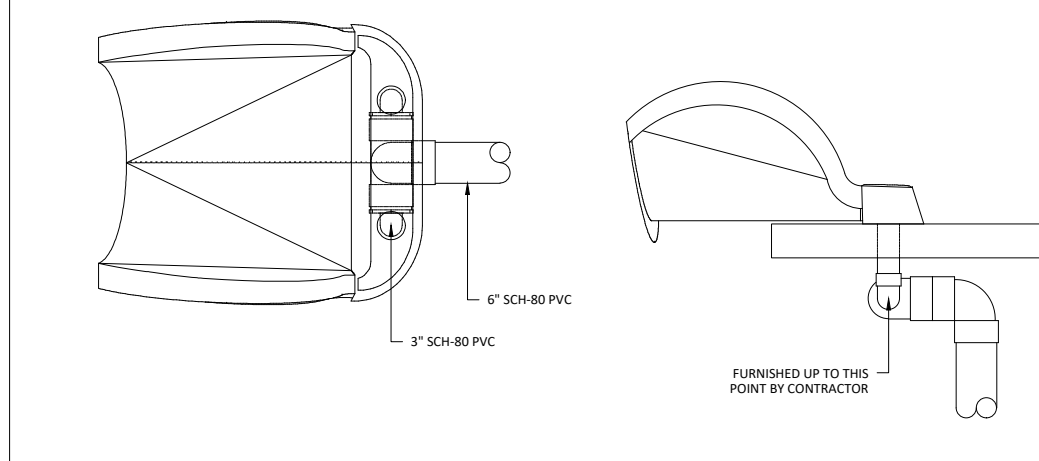
ID	PART #	CONFIGURATION	LENGTH
1	3-1/2" DIA	START TUB	3'-11 1/8"
2	C-STRAIGHT	CUSTOM STRAIGHT	5'-9 13/16"
3	ABS-5.9	45° WITH 5'-9" RADIUS	4'-6.25"
4	ABS-5.9	45° WITH 5'-9" RADIUS	4'-6.25"
5	ABS-5.9	45° WITH 5'-9" RADIUS	4'-6.25"
6	ABS-5.9	45° WITH 5'-9" RADIUS	4'-6.25"
7	ABS-5.9	45° WITH 5'-9" RADIUS	4'-6.25"
8	ABS-5.9	45° WITH 5'-9" RADIUS	4'-6.25"
9	ABS-5.9	45° WITH 5'-9" RADIUS	4'-6.25"
10	ABS-5.9	45° WITH 5'-9" RADIUS	4'-6.25"
11	ABS-5.9	45° WITH 5'-9" RADIUS	4'-6.25"
12	ABS-5.9	45° WITH 5'-9" RADIUS	4'-6.25"
13	1/2" DIA	LONG STRAIGHT	6'-0"
14	C-STRAIGHT	CUSTOM STRAIGHT	1'-7"
15	4-1/2" DIA	END TUB	4'-5 1/2"



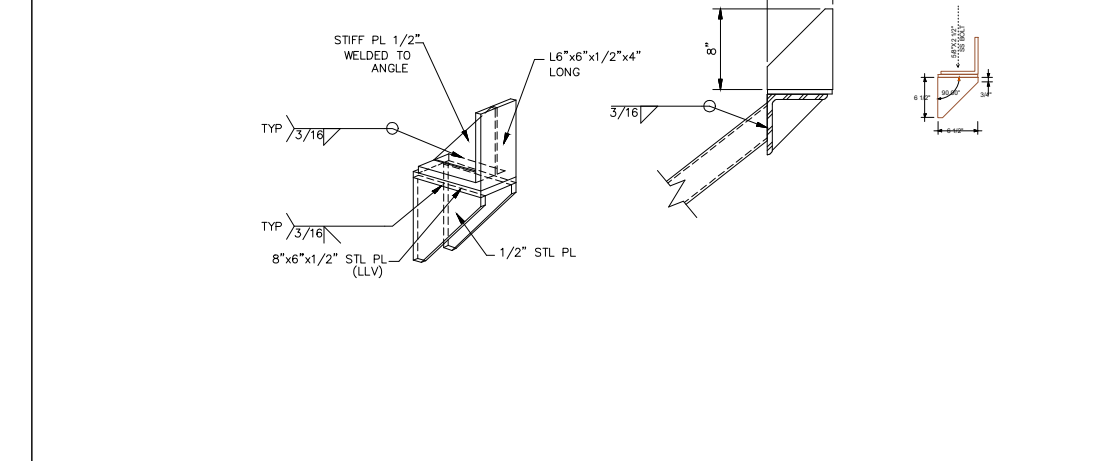
COLUMN FOUNDATION
AWSL-2 SCALE: NTS



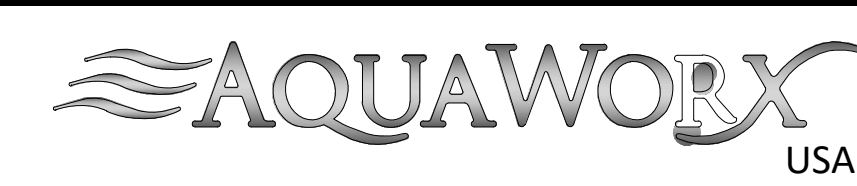
DETAILS
AWSL-2 SCALE: NTS



PLUMBING DETAIL
AWSL-2 SCALE: NTS



DIAG. ARM BRACKET DETAIL
AWSL-2 SCALE: NTS



OPEN FLUME WATER SLIDE (OPTION #1)
SCALE: 1/2" = 1'-0" DRAWN BY: C.P.S.
DATE: REVIEWED BY: B.H.
DRAWING NAME/NUMBER: AWSLS - 1

ENGINEER OF RECORD

REVISION NUMBER	REV DATE	REVISION DESCRIPTION	BY
1			C.P.S.

NOTES

10601 OAK STREET N.E.
ST. PETERSBURG, FL 33716
(888) 426-8511

400 GPM
APPROX. 67'-6" LONG, PLATFORM HEIGHT 9'-4"